



Tidford Road, Welling, DA16 3JS
Guide price £575,000 Freehold

The Homes Group are delighted to present this four bedroom family home which was refurbished throughout in November 2022 and extended to the rear to create a large kitchen/diner and into the roof space to create a master bedroom with en-suite shower room. The property is located within close proximity of Welling Station and Welling High Street plus it is situated within a mile of Bexley Grammar School and four local primary schools.

The accommodation comprises of an entrance hall with doors to the living room to the front, dining room and cloakroom. The dining room opens up into a large kitchen/diner which has doors opening out onto the garden, a large feature roof window, breakfast bar, built in appliances, modern lighting and a door into the separate utility room.

On the first floor there are two large double bedrooms, a single bedroom and family bathroom. There is a staircase that winds up to the master bedroom which has built in wardrobes and a door through to the en-suite shower room.

The 40' garden to the rear has been re-laid with artificial lawn and has a patio plus the driveway to the front has space for two cars. The property is offered with no forward chain.

Please note that the photographs were taken in December 2022, there have been no internal changes to the property or re-decoration since the photographs were taken.

Entrance Hall

Living Room
13' x 12'6 (3.96m x 3.81m)

Dining Room
12'7 x 11' (3.84m x 3.35m)

Kitchen/Diner
17'5 x 11'4 (5.31m x 3.45m)

Utility Room
7'5 x 6'4 (2.26m x 1.93m)

Cloakroom

First Floor Landing

Bedroom Two
12'7 x 11'1 (3.84m x 3.38m)

Bedroom Three
11'3 x 9'3 (3.43m x 2.82m)

Bedroom Four
8' x 6'9 (2.44m x 2.06m)

Family Bathroom
7'4 x 6'4 (2.24m x 1.93m)

Second Floor Landing

Master Bedroom
16'8 x 12'6 (5.08m x 3.81m)

En-Suite Shower Room
9'8 x 6'9 (2.95m x 2.06m)

Rear Garden
38' (11.58m)

Driveway to Front

Tenure - Freehold

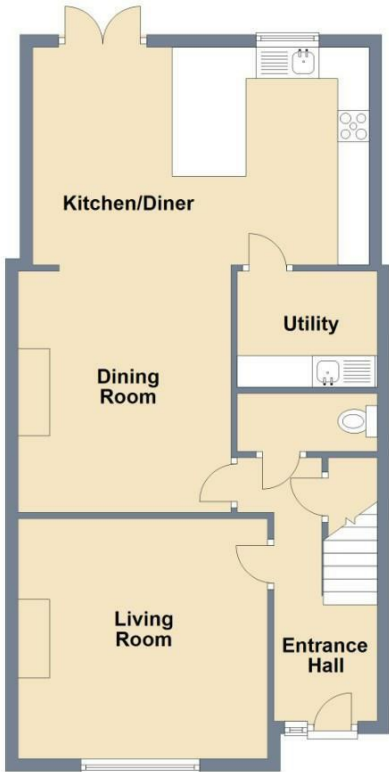
Council Tax - Band E





Ground Floor

Approx. 62.4 sq. metres (671.6 sq. feet)



First Floor

Approx. 43.1 sq. metres (463.4 sq. feet)



Second Floor

Approx. 26.8 sq. metres (288.7 sq. feet)



Total area: approx. 132.3 sq. metres (1423.7 sq. feet)



Energy Efficiency Rating		
	Current	Potential
Very energy efficient - lower running costs		
(92 plus) A		
(81-91) B		81
(69-80) C	72	
(55-68) D		
(39-54) E		
(21-38) F		
(1-20) G		
Not energy efficient - higher running costs		
England & Wales	EU Directive 2002/91/EC	

Viewing

Please contact The Homes Group Office on 01322 875000 if you wish to arrange a viewing appointment for this property or require further information.

These particulars, whilst believed to be accurate are set out as a general outline only for guidance and do not constitute any part of an offer or contract. Intending purchasers should not rely on them as statements of representation of fact, but must satisfy themselves by inspection or otherwise as to their accuracy. No person in this firm's employment has the authority to make or give any representation or warranty in respect of the property.

71-75 Shelton Street, London, WC2H 9JQ
 T: 01322 875000 | E: info@thehomesgroup.co.uk
 thehomesgroup.co.uk